

CHISON

Value Beyond Imaging

EBit 30 vet

Compact · Easy · State-of-the-art



WWW.CHISON.COM

Fast Easy



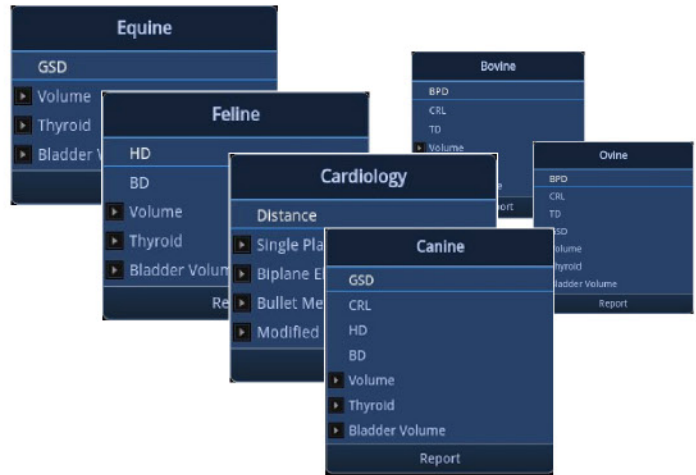
EB it 30 vet is developed with ultra-compact and lightweight design, outstanding veterinary performance, dedicated veterinary software packages and easy-to-use workflow, providing the complete solutions to small animals and large animals. Lot's of unique features, such as **18MHZ high frequency linear probe**, **Full screen display mode**, **2hrs battery life**, help to enhance the veterinarian's daily practice .

- ✓ 18MHZ high frequency linear probe
- ✓ Ultra-long battery life up to 2hrs
- ✓ Full Screen display mode
- ✓ Triplex mode
- ✓ Real time saving
- ✓ Complete DICOM solution



Easy to measure

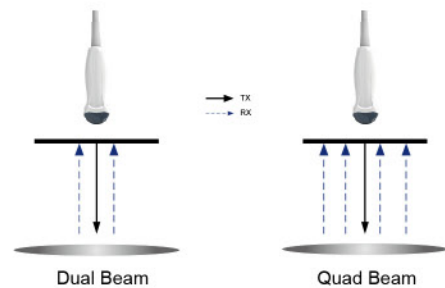
- Complete calculation solution for both small animal and large animal.
- Dedicated vet preset.
- User-defined measurement package, follow veterinarian's intuitiveness.



Easy to acquire the image

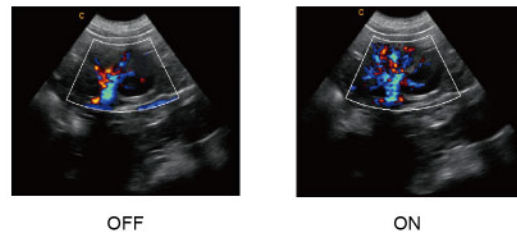
Q-beam for rapid breath of small animal.

- Compared to the traditional dual-beam, EBit 50 VET uses quad-beam to receive signal, thus doubles the volume of signal received as well as the frame rate.
- Higher frame rate ensures better diagnostic confidence and efficiency. Especially for rapid movement of small animals.



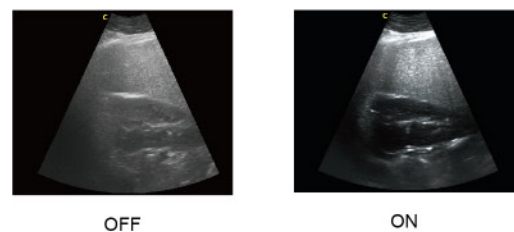
Q-flow for slow velocity of tiny vessel .

- This adaptive color detection technology can automatically adjust the criteria of color and noise assessment in different tissues.
- As a result, color sensitivity of low-velocity flow is greatly enhanced.



FHI for deep penetration of large animal .

- FHI is an innovative harmonic imaging technology that uses multiple transmission and receiving methods based on the patient's size and weight.
- This allows the EBit 50 VET to maintain image resolution when imaging larger patients.
- Traditional Tissue Harmonics and Phased Harmonics compromise image quality and resolution when penetration is increased.
- Chison's FHI technology greatly improves diagnostic abilities and clinical confidence in larger, difficult-to-image patients.



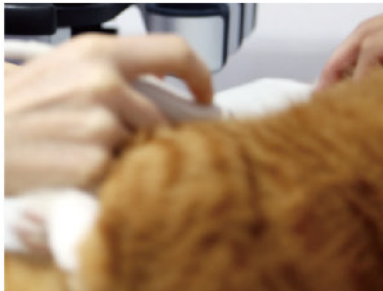
Easy to match all the applications

"I need a portable, light-weight ultrasound which is easy to go, easy to diagnose, easy to operate with sufficient measurement packages."

- 18MHz high frequency linear probe for small animals' abdomen examination, large animals' tendon examination
- Wide frequency range: 7.0MHz - 18.0MHz



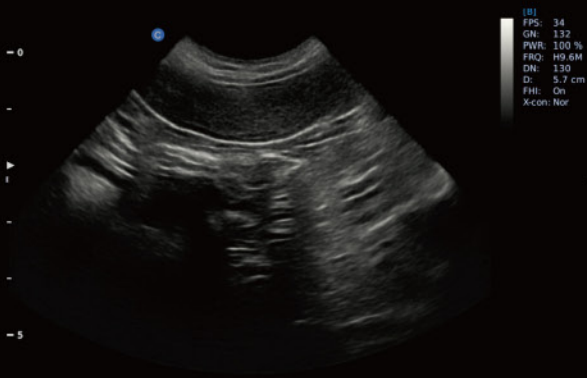
- Professional micro-convex probe for small animal's abdomen and cardiac scanning,
- Ergonomic design to release from scanning fatigue, ultra-light, small footprint
- Wide frequency range: 4.0MHz-12.0MHz



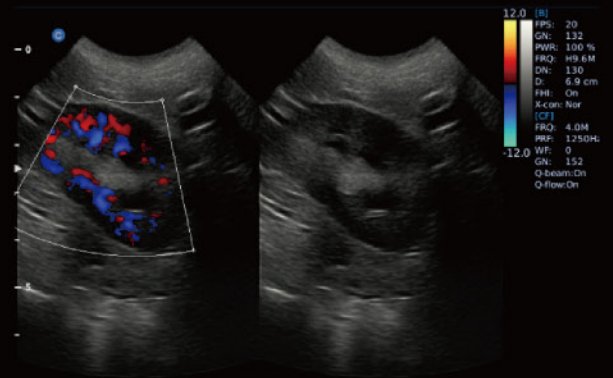
- Dedicated linear-rectal probe for large animal's reproduction
- Black color for durable usage, easy to clean
- Ultra-long cable to keep the system for the safe distance



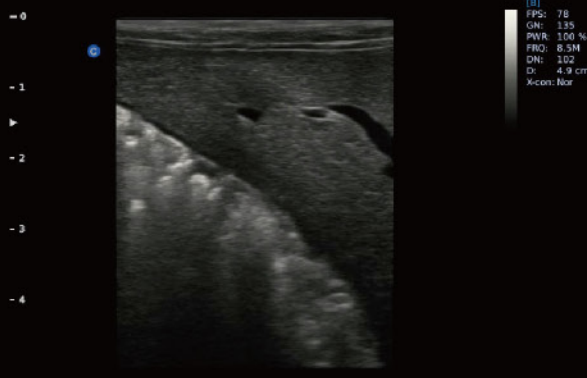
Premium Image Quality



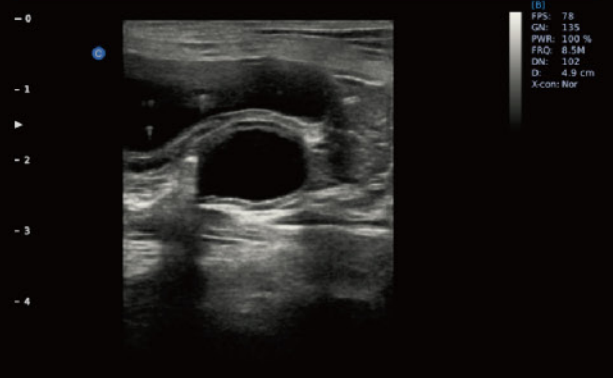
Canine Spleen, B Mode



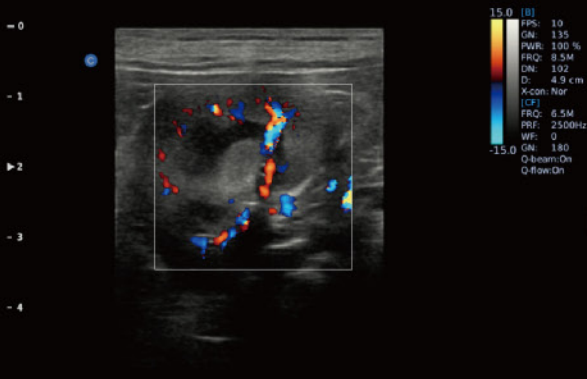
Canine Kidney, B/BC Mode



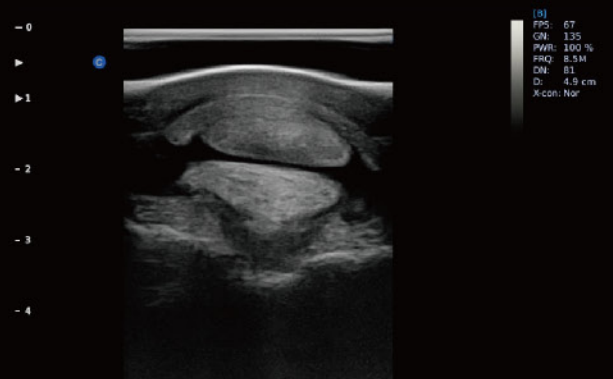
Canine Liver, B Mode



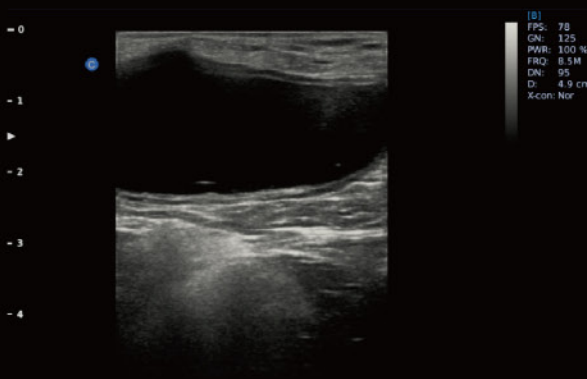
Canine Cyst, B Mode



Canine Kidney, C Mode



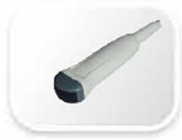
Equine Tendon, B Mode



Canine Bladder, B Mode



Canine Kidney, B Mode



4.0MHz-12.0MHz Micro-Convex
MC6-E



7.0MHz-18.0MHz(with FHI)Linear
L12-E



2.0MHz-6.8MHz Micro-Convex
MC3-E



4.0MHz-15.0MHz Linear
L7-E



4.0MHz-10.7MHz Micro-Convex
MC5-E



4.0MHz-10.0MHz Linear Rectal
L7V-E



2.0MHz-6.8MHz Convex
C3-E



5.0MHz-10.0MHz Trans-Rectal
L7R-E



CHISON Medical Technologies Co., Ltd.

Sales & Service Contact Address:

No.9, Xinhuihuan Road, Xinwu District, Wuxi, Jiangsu, China 214028

TEL : 0086-510-85310593 / 85310937 FAX : 0086-510-85310726 EMAIL : export@chison.com.cn

We reserve the right to make changes to this catalogue without prior notice
Please contact our local dealer for the latest information

